



Bart Dierickx

Composer

Belgium, Kontich

About the artist

Bart Dierickx was born on August 21, 1959 in Mortsel, Belgium
In ordinary life Bart is an electronic engineer and scientist. He took piano classes from his mother and Denise De Wit. Composition was largely autodidact, inspired by his brothers Evert and Wouter. He is the inventor of the "Virtual Music Instrument" on display in the Technopolis Museum in Mechelen.

About the piece



Title: Jalke's Ritme
Composer: Dierickx, Bart
Arranger: Dierickx, Bart
Licence: Copyright © Bart Dierickx
Instrumentation: Keyboard

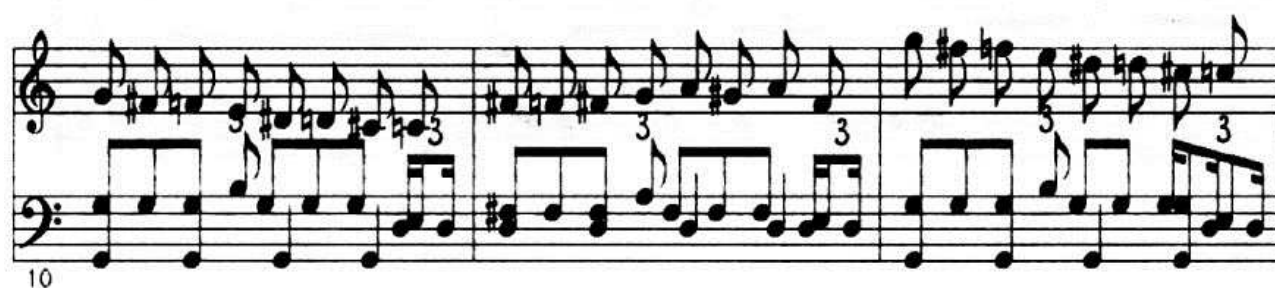
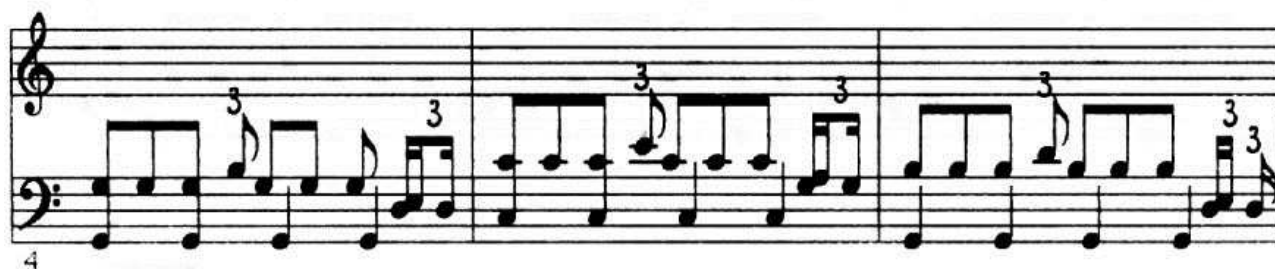
Bart Dierickx on [free-scores.com](http://www.free-scores.com)

<http://www.free-scores.com/Download-PDF-Sheet-Music-bartdierickx.htm>

- Download other works by this artist
- Listen to his pieces
- Contact the artist
- Write feedback comments
- Share your mp3 recording of this piece

Jalke's ritme

Bart Dierickx (c) 1994



Measures 13-15 of a musical score. The key signature has one sharp (F#). The melody in the treble clef features a rising eighth-note scale in measure 13, followed by a descending eighth-note scale in measure 14, and a triplet of eighth notes in measure 15. The bass line consists of eighth-note triplets in measures 13 and 14, and a triplet of eighth notes in measure 15. Measure numbers 13, 14, and 15 are printed below the staff.

Measures 16-18 of a musical score. The treble clef contains chords in measures 16 and 17, and a triplet of eighth notes in measure 18. The bass line continues with eighth-note triplets in measures 16, 17, and 18. Measure numbers 16, 17, and 18 are printed below the staff.

Measures 19-21 of a musical score. The treble clef contains chords in measures 19 and 20, and a triplet of eighth notes in measure 21. The bass line continues with eighth-note triplets in measures 19, 20, and 21. Measure numbers 19, 20, and 21 are printed below the staff.

Measures 22-24 of a musical score. The treble clef contains a triplet of eighth notes in measure 22, a triplet of eighth notes in measure 23, and a half note in measure 24. The bass line continues with eighth-note triplets in measures 22, 23, and 24. Measure numbers 22, 23, and 24 are printed below the staff.